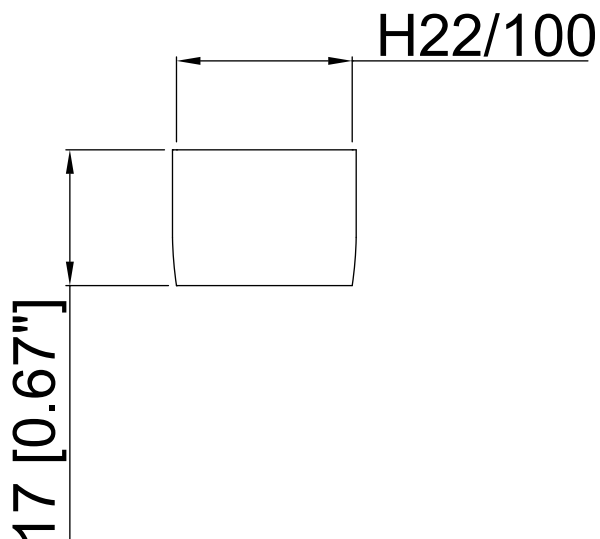


Plano técnico / Technical drawing

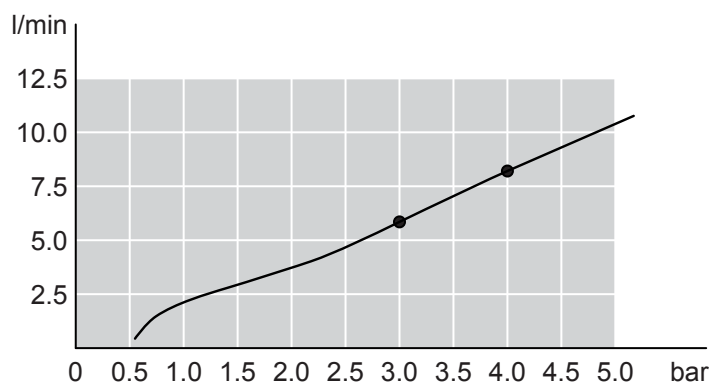


Descripción / Description

Aireador H22/100 (6 l/m ó 1,84 gpm a 3 bar), cromo. / Under volume water break H22/100 (6 l/m or 1,84 gpm to 3 bar), chrome.

Datos técnicos / Technical data

- Caudal 6 l/min (1,84 gpm) a 3 bar (44 psi). / Flow rate 6 l/min (1,84 gpm) to 3 bar (44 psi).
- Caudal 8,3 l/min (2,2 gpm) a 4 bar (58 psi). / Flow rate 8,3 l/min (2,2 gpm) to 4 bar (58 psi).
- 0,5 µm cromo y 15 µm níquel. / 0,5 µm chrome and 15 µm nickel.
- Fabricado en latón. / Made of brass.
- Norma USA A112.18.1M (lavabo, bidé y fregadero) / USA norm A112.18.1M (lavatory, bidet and sink).



Modelo / Model Acabados / Finishes

AI0008-00

Cromo / Chrome

MZ DEL RÍO S.A.

MZ DEL RIO, S.A.

Pol. Ind. Empresarium. Calle lentisco, 12
50720 La Cartuja Baja (Zaragoza). España
Tel. +34 976 571 517 - Fax +34 976 572 018
E-mail: mzrio@mzrio.com · www.mzrio.com